

## WiFi Basics: How Do I Connect to the Wireless Network?

*NOTE: Every computer is different. These instructions are written for computers running Windows XP Service Pack 2.*

### Make Sure Your Wireless is Enabled:

1. Click **Start**
2. Right click on **My Network Places**
3. Choose **Properties**.
4. You should see a connection labeled **Wireless Network Connection**.

If the connection looks similar to the one in the picture to the right, continue to the next section.



If the second line says **Disabled**, double click and the connection will be enabled.



### Connect to the Library's Wireless Network:

1. Right click on **Wireless Network Connection**.

Choose **View Available Wireless Networks**.

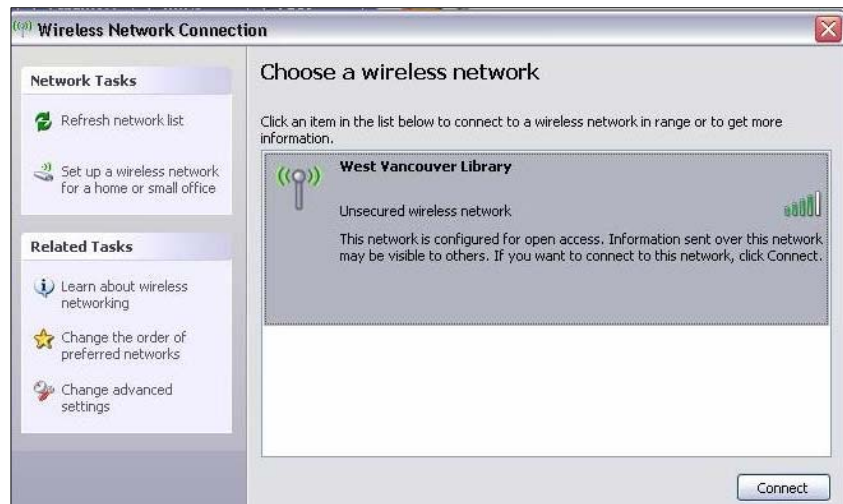
Double click on the entry marked **West Van Library**.



*If, instead of seeing a list of available networks, you see an error message saying*

*Windows Cannot Configure This Wireless Connection*

*Please refer to the WiFi Help: Windows Can't Configure My Connection handout.*



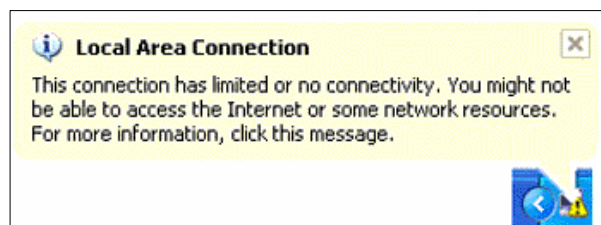
2. Click **Connect Anyway** when prompted to connect to an insecure network.



3. A graphic should now appear in the bottom corner of your screen letting you know that you are connected.



*If you receive a warning message similar to the one shown on the right, please consult the [WiFi Help: I Can't Connect \(or Stay Connected\)](#) handout.*



4. Open a web browser (Internet Explorer, Firefox). You will be redirected to our page of terms and conditions.
5. Read through the Terms & Conditions and, should you choose so, click **I accept**.

*NOTE: If you do not accept the Terms & Conditions, you will only be able to access the Library website and catalogue.*