

## WiFi Basics: Do I Have Wireless on my Computer?

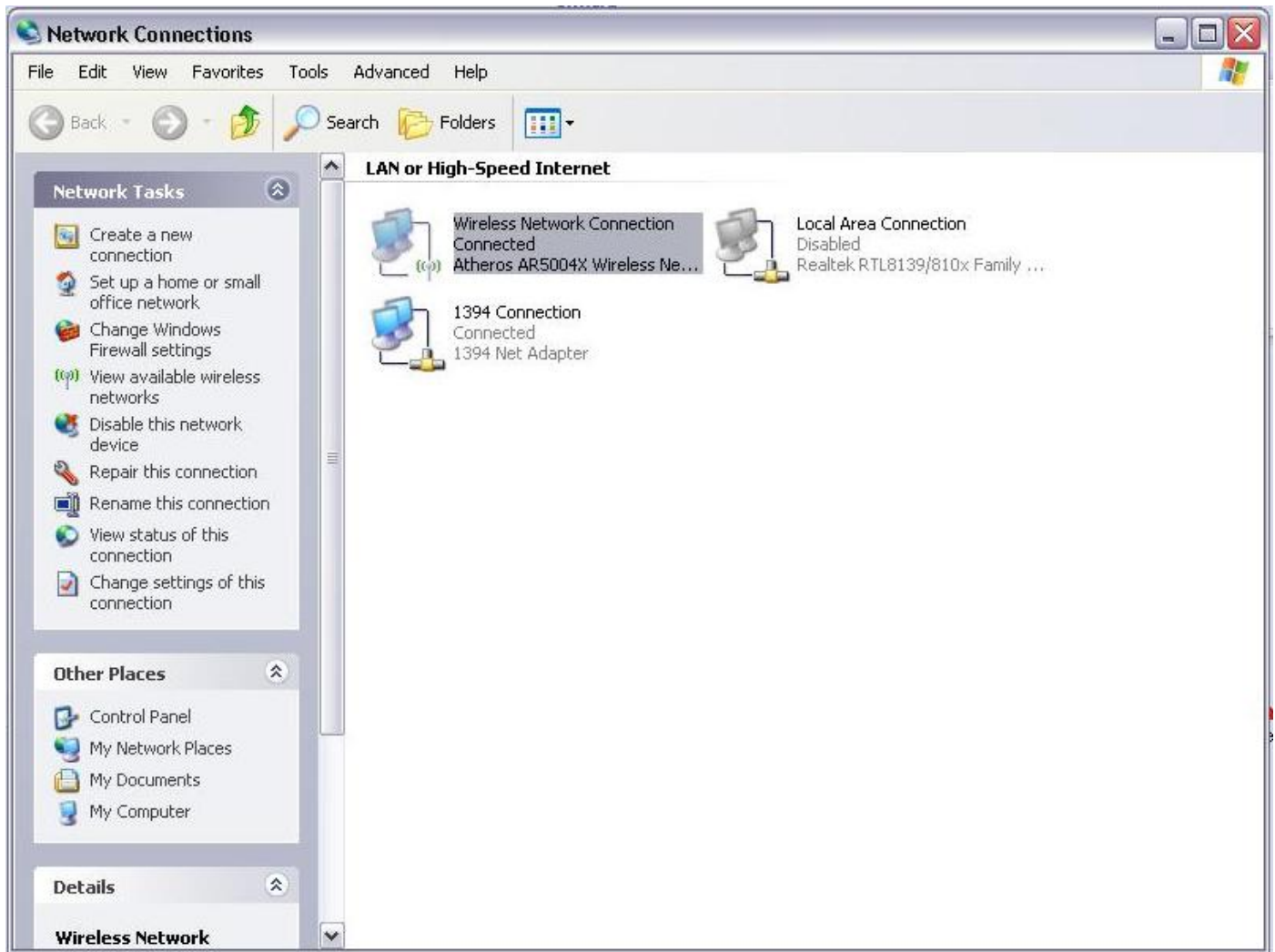
---

*NOTE: Every computer is different. These instructions are written for computers running Windows XP Service Pack 2.*

---

### Check to See if You Have Wireless:

1. Click on the Start Menu
2. Choose Control Panel
3. Choose Network Connections (If this is not available, click Switch to Classic View)



If you see a connection marked **Wireless Network Connection** you have wireless.

If you do not see this connection, go to the following page for instructions on how to ensure your WiFi hardware is properly enabled.

## Built In - Switches

If your laptop has built-in wireless, you may have a switch to turn it on. Please consult your User Manual to find out whether your laptop has such a switch.

Please ensure that this switch is turned on.

*(Examples of hardware switches)*



## Exterior - External Cards

If your laptop does not have built-in wireless, you may still have wireless through an external adapter.

*(Examples of hardware switches)*



If you are using an external adapter, please ensure that it is properly seated (fully pushed in), and turned right side up. Most WiFi devices, if working properly, have status lights which will illuminate to tell you the device is functioning.

If your card does not appear to be functioning, please consult its User Manual for assistance.