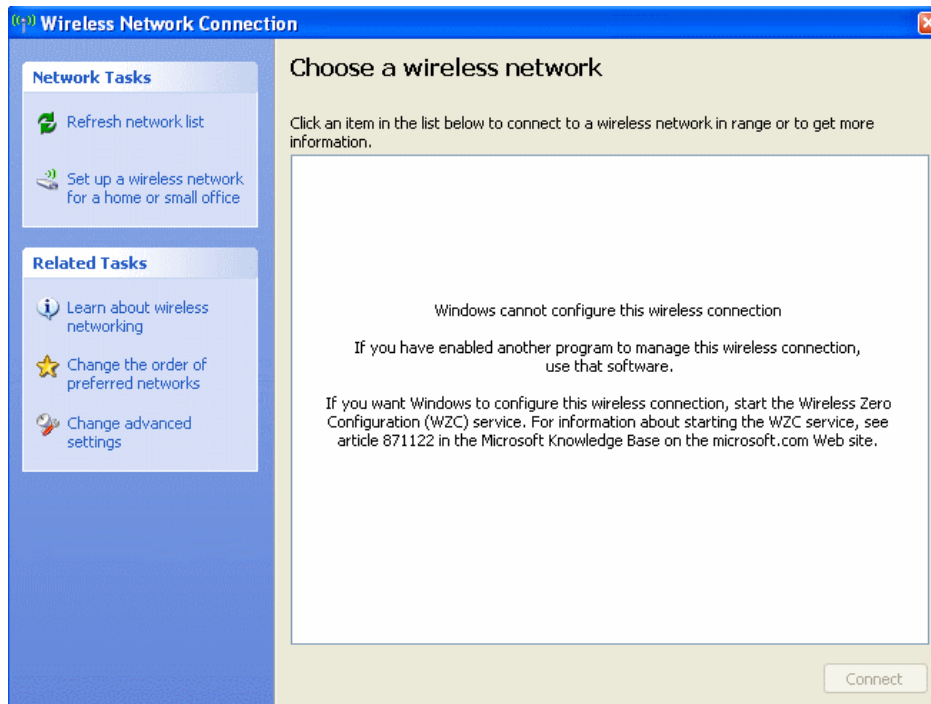


WiFi Help: Windows Can't Configure My Connection

If this message appears when you are trying to browse for wireless networks, follow the instructions below to get connected to the Library's wireless network.



Causes

This is not an error. Rather, it is Windows' way of informing you that another program is managing your wireless connections. This is common, because many resellers include third party wireless managers with their laptops.

Solutions

You have two options:

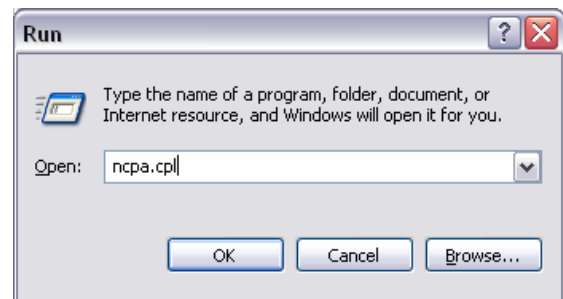
1. Check your user manual, and any additional documentation that came with the laptop or add-on wireless hardware you have installed. This will tell you what program to look for and how to configure WiFi connections with it.
2. Follow the steps outlined on the next pages to disable the third-party client and let Windows XP manage your wireless connection.

Enabling Windows XP's Zero Configuration service

1. Click on the Start button.

Press **Run**.

In the dialogue box, type Ncpa.cpl



2. A window will open, listing your available network connections. Find the one marked **Wireless Network Connection** and right-click on it.

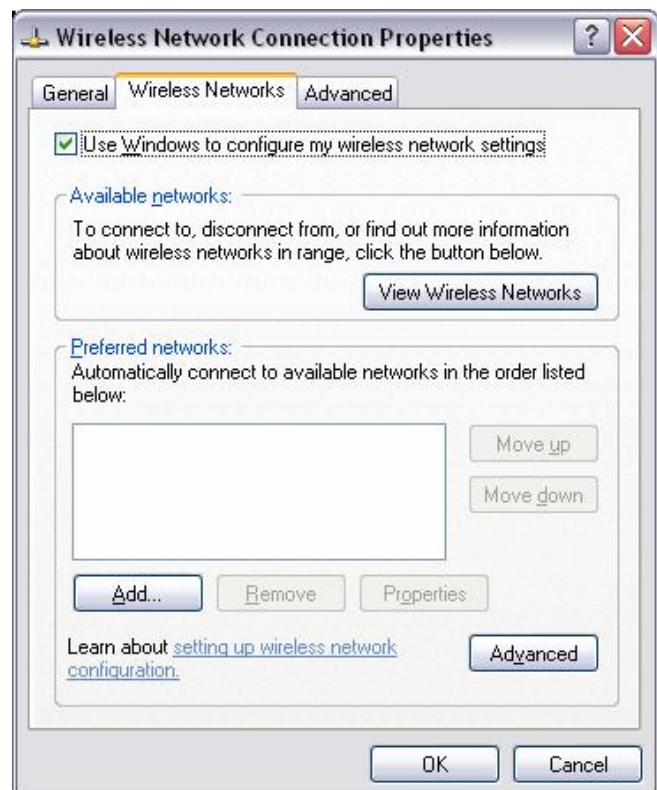
Choose **Properties**.



3. The **Wireless Network Connection Properties** window will open.

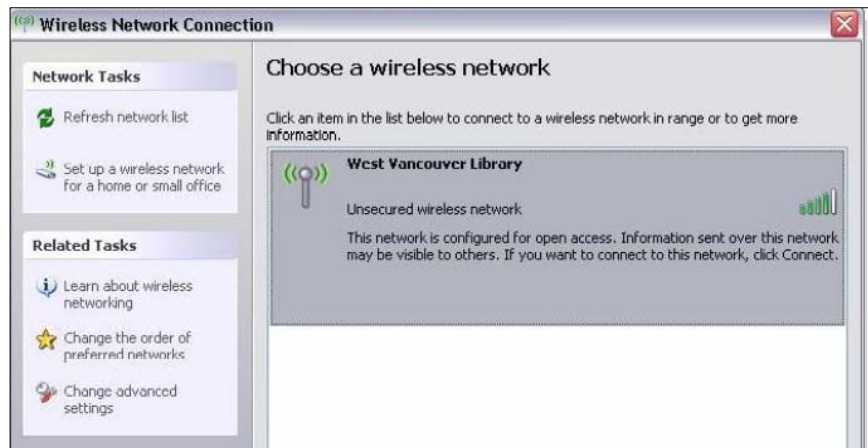
Click the **Wireless Networks** tab and check the option marked **Use Windows to Configure my Wireless Settings**.

Press **OK**.



4. Press the **View Wireless Networks** button.

Double click the **West Vancouver Library** wireless connection.



5. When prompted, press **Connect Anyway**.



6. A message should pop up in the bottom right of your screen telling you that you have successfully connected.

